

**SUPERVISORS DISTRICT AND VOTING PRECINCT ORDINANCE
OF
WYTHE COUNTY, VIRGINIA
ORDINANCE NO. 2021-06**

A public hearing was held on Tuesday, November 23, 2021 at 6:05 p.m. in the Board of Supervisors Meeting Room, 340 South Sixth Street, Wytheville, Virginia 24382, to consider reenacting an ordinance, keeping the same districts under Ordinance No. 2011-1 and its amendments, to comply with redistricting guidelines based on the 2020 Census information, and to repeal the prior Supervisors District and Voting Precinct Ordinance, Ordinance No. 2011-1 and its amendments. This ordinance is in accordance with the Constitution of Virginia which requires local election districts to use the substantially equal population standard.

ARTICLE I – Title, Authority, Jurisdiction and Purpose

- 1.1 **Title.** This ordinance shall hereafter be known as, and may be cited as the “Supervisor District and Voting Precinct Ordinance of Wythe County, Virginia” Ordinance No. 2021-06.
- 1.2 **Authority.** This ordinance is adopted pursuant to the authority of Sections 15.2-1211 and 24.2-305, et seq. of the Code of Virginia, as amended.
- 1.3 **Jurisdiction.** The provisions of this ordinance shall apply to Wythe County, including its incorporated municipalities.
- 1.4 **Purpose.** This ordinance provides for the realignment and designation of the Supervisor Districts and Voting Precinct boundaries in accordance with the 2020 decennial census.

Article II – Supervisor Districts

- 2.1 **Supervisor Districts.** Supervisor District Numbers 1-6 in the county, with the boundary lines and names thereof respectively as constituted in Article III, are established and declared to be the election districts of the county for the purposes of election of members of the Board of Supervisors and School Board and shall so continue unless and until the Supervisor Districts shall be changed as provided by law.
- 2.2 **Supervisor at Large.** Chapter 95 of the Acts of General Assembly approved on May 1, 1998, authorized Wythe County to elect one additional member of the Board of Supervisors. The supervisor at large shall be elected by vote of all the voters of Wythe County for the regular term provided by law.
- 2.3 **Election of Supervisors.** One supervisor shall be elected from each supervisor district (1-6) and one supervisor shall be elected for the supervisor-at-large district.

Article III – Supervisor Districts and Voting Precincts

3.1 Supervisor Districts and Voting Precincts. The names and polling places for the supervisor districts and voting precincts of Wythe County are as set forth below:

Supervisor District No. 1 (Black Lick)

Royal Oak Precinct	George Wythe High School
Rural Retreat Precinct	Rural Retreat Community Center

Supervisor District No. 2 (West Wytheville)

West Wytheville Precinct	George Wythe High School
--------------------------	--------------------------

Supervisor District No. 3 (East Wytheville)

East Wytheville Precinct	Wytheville Community Center
--------------------------	-----------------------------

Supervisor District No. 4 (Fort Chiswell)

Fort Chiswell Precinct	Fort Chiswell High School
Max Meadows Precinct	Max Meadows Ruritan Club

Supervisor District No. 5 (Lead Mines)

Jackson Memorial Precinct	Jackson memorial Elementary School
Sheffey Precinct	Sheffey Elementary School

Supervisor District No. 6 (Speedwell)

Huddle Precinct	Sheffey Elementary School
Zion Precinct	Speedwell Fire Department
Evergreen Precinct	Evergreen Activity Center

Central Absentee Precinct Wythe County Courthouse Complex

3.2 Supervisor District and Precinct Boundaries. The boundaries for each supervisor district and voting precinct of Wythe County shall be as follows:

3.2.1 Supervisor District 1 – Black Lick

Royal Oak Precinct

Beginning on the Wythe-Bland County line southwest of Lookout Tower being 0.3 miles west from the point where U.S. Route 52 intersects the Wythe-Bland County line; thence moving down the slope of the mountain in a southeasterly direction to the head water of Stoney Fork; thence following Stoney Fork 3.5 miles in a southeasterly direction to its intersection with Stoney Fork Road, U.S. Route 52; thence in a southerly direction along Stoney Fork Road to its intersection with Laurel Run Creek; thence in a southwesterly direction along Laurel Run Creek to its intersection with Blacklick Road, State Route 680; thence in a southerly direction along Blacklick Road to its intersection with Stoney Fork Creek; thence in a southerly direction along Stoney Fork Creek to

its intersection with Reed Creek; thence in a southerly direction along Reed Creek, crossing Interstate 81 and Lee Highway, U.S. Route 11, to its intersection with Old Stage Road, State Route 667; thence in a westerly direction along Old Stage Road to its intersection with Johnny Lane, State Route 652; thence in a southerly direction along Johnny Lane to its intersection with Greasy Creek Road, State Route 653; thence in a southerly direction along Greasy Creek Road to its intersection with Crockett Road, State Route 690; thence in a northwesterly direction along Crockett Road to its intersection with State Route 625, Crockett Road; thence in a northerly direction on Crockett Road to its intersection with Scenic Trail Road, State Route 690; thence in a northwesterly direction along Scenic Trail Road to its intersection with Crockett Road, State Route 625; thence in a northwesterly direction on Crockett Road to its intersection with State Route 667, Old Stage Road; thence westerly along Old Stage Road to its intersection with State Route 625, Apple House Road; thence in a northerly direction along Apple House Road to its intersection with Lee Highway, U.S. Route 11; thence in a westerly direction along Route 11 to its intersection with Gap of the Ridge Road, State Route 625; thence in a northerly direction along Route 625 to its intersection with Blacklick Road, State Route 680; thence in a westerly direction along Route 680 to its intersection with Crawfish Road, State Route 625, thence in a northerly direction along State Route 625 to its end; thence in a northwesterly direction along an imaginary line to the Wythe-Bland County line; thence in a northeasterly direction along Wythe-Bland County line to a point southwest of Lookout Tower being 0.3 miles west from the point where U.S. Route 52 intersects the Wythe-Bland County line, the point of beginning.

Rural Retreat Precinct

Beginning at the northwestern corner of Wythe County at the intersection of the boundaries of Wythe, Smyth, and Bland Counties; thence in a northeasterly direction along Wythe-Bland County line to its intersection with an imaginary point, approximately eight miles east of the point of beginning; thence in a southerly direction along imaginary line to the end of Crawfish Road, State Route 625; thence in a southerly direction along Crawfish Road to its intersection with Blacklick Road, State Route 680; thence in a easterly direction along Blacklick Road to its intersection with Gap of the Ridge Road, State Route 625; thence in a southerly direction along Gap of the Ridge Road to its intersection with U.S. Route 11; thence in a easterly direction along U.S. Route 11 to its intersection with Apple House Road, State Route 625; thence in a southerly direction along Apple House Road to its intersection with Old Stage Road, State Route 667; thence in a easterly direction along Old Stage Road to its intersection with Crockett Road, State Route 625; thence in a southeasterly direction along Crockett Road to its intersection with Scenic Trail Road, State Route 690; thence in a southeasterly direction along Scenic Trail Road to its intersection with Crockett Road, State Route 625; thence in a southerly direction along Crockett Road to its intersection with Crockett Road, State Route 690; thence in a southeasterly direction on Crockett Road to its intersection with the KV765 American Electric Power Transmission power line;

thence along said transmission power line west for 1.5 miles to its intersection with Huckleberry Road, State Route 669; thence in a northerly direction along Huckleberry Road to its intersection with Ridge Avenue, State Route 674; thence in a westerly direction along Ridge Avenue to its intersection with Myrtle Lane, State Route 677; thence in a westerly direction along Myrtle Lane to its intersection with Cedar Springs Road, State Route 749; thence in a southerly direction along Cedar Springs Road to its intersection with Fairview Church Road, State Route 691; thence in a westerly direction along Fairview Church Road to its intersection with Pine Glade Road, State Route 670; thence in a westerly line to an intersection in the Wythe - Smyth County line; thence in a northerly direction along the Wythe - Smyth county line to the point of beginning.

3.2.2 Supervisor District 2 – West Wytheville Precinct

West Wytheville Precinct

Beginning at the intersection of Stoney Fork and Stoney Fork Road, U.S. Route 52; thence following Stoney Fork upstream for over 3.5 miles to its headwaters; thence north to the top of the mountain to the Wythe-Bland County line southwest of Lookout Tower being 0.3 miles west from the point where U.S. Route 52 intersects the Wythe-Bland County line; thence in a northeast direction following the Wythe-Bland county line passing the Lookout Tower and U.S. Route 52; thence continuing along the Wythe-Bland county line southeasterly to a point where it intersects with an American Electric Transmission power line approximately 0.4 miles east of Interstate 77; thence following the American Electric Company Transmission power line south to its intersection with Cove Road, State Route 603; thence following Cove Creek west to its intersection with Interstate 77 at a crossover; thence following Interstate 77 northerly 0.5 miles to its intersection with an unnamed stream; thence following unnamed stream westerly to its intersection with an unnamed road; thence following the unnamed road west to its intersection with Queens Knob, State Route 659 just south of the intersection of Queens Knob and Sharitz Road; thence following Queens Knob south to its intersection with Fairview Road, State Route 661; thence in a southeasterly direction along Fairview Road to its intersection with North Fourth Street, U.S. Route 21 and 52; thence in a southeasterly direction along North Fourth Street crossing Interstate 81 and Main Street to its intersection with Calhoun Street; thence in a southerly direction along Calhoun Street to its intersection with Sixth Street; thence in a southeasterly direction along Sixth Street to its intersection with Clay Street; thence in an easterly direction along Clay Street to its intersection with Church Street; thence in a southerly direction along Church Street to its intersection with Reed Creek; thence in a westerly and a northerly direction along the centerline of Reed Creek crossing Old Stage Road and Interstate 81 to its intersection with Stoney Fork Creek; thence in a northerly direction along Stoney Fork Creek to its intersection with Blacklick Road, State Route 680; thence in a northerly direction along Blacklick Road to its intersection with Laurel Run Creek; thence in a northeasterly direction along Laurel Run Creek to its intersection with Stoney Fork Road, thence in a north direction along Stoney Fork Road to the intersection of Stoney Fork and Stoney Fork Road,

U.S. Route 52, the point of beginning.

3.2.3 Supervisor District 3 – East Wytheville

East Wytheville Precinct

Beginning at a point on the Wythe-Bland County line, approximately 0.4 miles east of the Interstate 77 Tunnel, where the American Electric Power Company Transmission line enters Wythe, thence in an easterly direction along the Wythe-Bland County line to its intersection with the KV 765 electric transmission line; thence following the KV 765 electric transmission line in a southeasterly direction to a point just north of the northern most peak of Cove Mountain; thence south to the top of the Cove Mountain; thence following the top of the ridge line of Cove Mountain southwesterly for approximately 3 miles to a point in the saddle or drainage divide, north of the head waters of West Fork and Mudlick Branch; thence in a westerly direction along the saddle to the headwaters of Mudlick Branch; thence in a westerly direction along Mudlick Branch to its intersection with Cove Creek; thence in a southeasterly direction along Cove Creek to its intersection with Turley Farm Road; thence in a southwesterly direction along Turley Farm Road to its intersection with Peppers Ferry Road, State Route 610; thence along Peppers Ferry Road easterly to its intersection with Cove Creek; thence south along Cove Creek to its intersection with the Norfolk Southern Railway; thence in a westerly direction along Norfolk Southern Railway to its intersection with Kents Lane, State Route 704; thence in a southwesterly direction along Kents Lane to its intersection with Interstate 77 and 81; thence directly across Interstate 77 and 81 to Chapman Road; thence in a southeasterly direction along Chapman Road to its intersection with Atkins Mill Road, State Route 649; thence in a southwesterly direction along Atkins Mill Road to its intersection with Whippoorwill Road, State Route 720; thence in a southwesterly direction along Whippoorwill Road to its intersection with Broadway Road, State Route 640; thence in a northeasterly direction along Whippoorwill Road to its intersection with Barrett Mill Road, State Route 696; thence in a northerly direction along Barrett Mill Road and Church Street, crossing Reed Creek, to its intersection with Clay Street; thence in a westerly direction along Clay Street to its intersection with Sixth Street; thence in a northerly direction along Sixth Street to its intersection with Calhoun Street; thence in a northerly direction along Calhoun Street to its intersection with North Fourth Street; thence in a northwesterly direction along North Fourth Street, crossing Main Street and Interstate 81, to its intersection with Fairview Road, State Route 661; thence in a northwesterly direction along Fairview Road to its intersection with Queens Knob, State Route 659; thence northerly with Queens Knob to its intersection with an unnamed trail just south of the intersection of Queens Knob and Sharitz Road; thence following the unnamed road to the east to its intersection with an unnamed stream; thence following said unnamed stream east to its intersection with interstate 77; thence following Interstate 77 south to its intersection with Cove Creek at a crossover; thence following Cove Creek easterly to its intersection with Cove Road, State Route 603; thence following Cove Road north for 200 feet to its intersection with the KV 765 electric transmission power line; thence following the

KV 765 transmission power line north to the intersection with the Wythe-Bland County line, the point of beginning.

3.2.4 Supervisor District 4 – Fort Chiswell

Max Meadows Precinct

Beginning at the intersection of the Wythe-Bland County line and the KV 765 electric transmission line; thence following the KV 765 electric transmission line southeasterly to a point just north of the northern most peak of Cove Mountain; thence south to the top of the Cove Mountain; thence following the top of the ridge line of Cove Mountain southwesterly for approximately 3 miles to a point north of the saddle or drainage divide between the head waters of West Fork and Mudlick Branch; thence in a westerly direction along the saddle to the headwaters of Mudlick Branch; thence in a westerly direction along Mudlick Branch to its intersection with Cove Creek; thence in a southeasterly direction along Cove Creek to its intersection with Turley Farm Road; thence in a southwesterly direction along Turley Farm Road to its intersection with Peppers Ferry Road, State Route 610; thence along Peppers Ferry Road easterly to its intersection with Cove Creek; thence south along Cove Creek to its intersection with the Norfolk Southern Railway; thence in a westerly direction along Norfolk Southern Railway to its intersection with Kents Lane, State Route 704; thence in a southwesterly direction along Kents Lane to its intersection with Interstate 77 and 81; thence in an easterly direction along Interstate 81 to its intersection with the Wythe-Pulaski County line; thence in a northwesterly direction along Wythe-Pulaski County line to the corner of Wythe, Pulaski and Bland County lines; thence west along the Wythe and Bland County line to the point of beginning.

Fort Chiswell Precinct

Beginning at intersection of Wythe-Pulaski County line and Interstate 81, thence in a westerly direction along Interstate 81 to its intersection with Atkins Mill Road, State Route 649; thence in a southwesterly direction along Atkins Mill Road to its intersection with Whippoorwill Road, State Route 720; thence in a southwesterly direction along Whippoorwill Road to its intersection with Broadway Road, State Route 640; thence in a southeasterly direction along Broadway Road to the crest of Sand Mountain-Lick Mountain; thence in an easterly direction along the ridge of Sand Mountain-Lick Mountain to its intersection with Lots Gap Road, State Route 634; thence in a southerly direction along Lots Gap Road to its intersection with Walton Furnace Road, State Route 631; thence in a southeasterly direction along Walton Furnace Road to its intersection with Ivanhoe Road, U.S. Route 94; thence in a northeasterly direction along Ivanhoe Road to its intersection with Fort Chiswell Road, U.S. Route 52; thence in a southeasterly direction along Fort Chiswell Road to its intersection with Major Graham Road, State Route 619; thence in a northeasterly direction along Major Graham Road to its intersection with Interstate 77; thence in a southerly direction along Interstate 77 to its intersection with the centerline of the New River; thence in a northeasterly direction along the centerline of the New River to its intersection with the Wythe- Pulaski

County Line; thence in a northwesterly direction along the Wythe-Pulaski County Line to its intersection with Interstate 81, the point of beginning.

3.2.5 Supervisor District 5 – Lead Mines

Jackson Memorial Precinct

Beginning at the junction of the centerline of New River and the Wythe-Pulaski County line; thence in a southeasterly direction along the Wythe-Pulaski County line to the junction of the Wythe-Pulaski-Carroll County lines; thence in a westerly direction along the Wythe-Carroll County line, to its junction with the New River; thence in a northeasterly direction along the south side of New River to the junction with the Wythe-Pulaski County line, the point of beginning.

Sheffey Precinct

Beginning at the junction of the New River and the Wythe-Carroll County line; thence in a westerly direction to its intersection with Ivanhoe Road, Route 94; thence along Ivanhoe Road in a north direction to its intersection with an unnamed road north of State Route 742 intersection; thence west along unnamed road to its intersection with Painters Hill Road, State Route 742; thence northwesterly along Painters Hill Road to its intersection with Wise Road; thence along Wise Road to its north intersection with Painters Hill Road; thence northwest along Painters Hill Road 200 feet to its intersection with an unnamed stream; thence following unnamed stream west to its intersection with an American Electric Company Transmission power line; thence northwest along the American Electric Company Transmission power line to its intersection with Pope Road, State Route 642; thence in an easterly direction along Pope Road to its intersection with Ivanhoe Road, State Route 94; thence in a northerly direction along Ivanhoe Road to its intersection with Sheffey School Road; thence in a northerly direction along Sheffey School Road to its intersection with Piney Mountain Road, State Route 640; thence in a northwesterly direction along Piney Mountain Road to its intersection with Broadway Road, State Route 640; thence in northwesterly direction along Broadway Road to its intersection with the crest of Sand Mountain-Lick Mountain; thence in a easterly direction along the ridge of Sand Mountain-Lick Mountain to its intersection with Lots Gap Road, State Route 634; thence in a southerly direction along Lots Gap Road to its intersection with Walton Furnace Road, State Route 631; thence in a southeasterly direction along Walton Furnace Road to its intersection with Ivanhoe Road, State Route 94; thence northeasterly direction along Ivanhoe Road to its intersection with Fort Chiswell Road, U.S. Route 52; thence in a southeasterly direction along Fort Chiswell Road to the intersection of Major Graham Road, State Route 619; thence in a northeasterly along Major Graham Road to its intersection with Interstate 77; thence in a southerly direction along the west right of way of Interstate 77 to its intersection with the centerline of the New River; thence in an southwesterly direction along the centerline of the New River to the junction of New River and the Wythe-Carroll County line, the point of beginning.

3.2.6 Supervisor District 6 – Speedwell

Huddle Precinct

Beginning at the intersection of Rakes Town Road, State Route 601, and the Wythe-Carroll County Line; thence in a southwesterly direction along the Wythe-Carroll County line to the junction of Wythe-Carroll-Grayson County lines; thence in a westerly direction along the Wythe-Grayson County line to its intersection with Cripple Creek Road, State Route 602; thence in a northerly direction on Cripple Creek Road to its intersection with State Route 619, Cripple Creek Road; thence in a westerly direction along Cripple Creek Road to its intersection with State Route 602, Cripple Creek Road; thence in a northerly direction along Cripple Creek Road to its intersection with State Route 690, Slate Spring Branch Road; thence in a easterly direction along Slate Spring Branch Road to its intersection with Davis Cemetery Road, State Route 646; thence in a easterly direction along Davis Cemetery Road to its intersection with Mule Hell Road, State Route 642; thence in a northwesterly direction to the end of Mule Hell Road; thence in a northeasterly direction along an imaginary line across Swecker Lick and Sand Mountain to its intersection with Broadway Road, State Route 640 at its crest; thence in a southeasterly direction along Broadway Road to its intersection with Piney Mountain Road, State Route 640; thence in a southeasterly direction along Piney Mountain Road to its intersection with Sheffey School Road; thence in a southerly direction along Sheffey School Road to its intersection with Ivanhoe Road, State Route 94; thence in a southerly direction along Ivanhoe Road to its intersection with Pope Road, State Route 642; thence in a westerly direction along Pope Road to its intersection with an American Electric Company Transmission power line; thence along the American Electric Company Transmission power line southeasterly to its intersection with an unnamed stream; thence east along the stream to its intersection with Painters Hill Road, State Route 742; thence along Painters Hill Road southeast for 200 feet to its north intersection with Wise Dr; thence following Wise Dr to its south intersection with Painters Hill Road; thence following Painters Hill Road southeast for 0.5 miles to its intersection with an unnamed road; thence following the unnamed road east to its intersection with Ivanhoe Road, Route 94; thence south along Ivanhoe Road to its intersection with the Wythe-Carroll County line; thence southwest along the Wythe-Carroll County line to its intersection with Rakes Town Road, State Route 601, the point of beginning.

Zion Precinct

Beginning at the junction of Wythe-Grayson-Smyth County lines; thence in a northerly direction along the Wythe-Smyth County line to a point west of the intersection of Pine Glade Road, State Route 670, and Fairview Church Road, State Route 691; thence in an easterly line to the intersection of Pine Glade Road, State Route 670, and Fairview Church Road, State Route 691; thence in an easterly direction along Fairview Church Road to its intersection with Cedar Springs Road, State Route 749; thence in a northerly direction along Cedar Springs Road to its intersection with Myrtle Lane, State Route 677; thence in an

easterly direction along Myrtle Lane to its intersection with Ridge Avenue, State Route 674; thence in easterly direction along Ridge Avenue to its intersection with Huckleberry Road, State Route 669; thence in a southerly direction along Huckleberry Road to its intersection with an American Electric Company Transmission power line; thence east along the American Electric Company Transmission power line 1.5 miles to its intersection with Crockett Road, State Route 690; thence along Crockett Road southeast to its intersection with Cripple Creek Road, State Route 690; thence in a southeasterly direction along Cripple Creek Road to its intersection with Cripple Creek Road, State Route 602; thence in a southerly direction along Cripple Creek Road to its intersection with State Route 619, Cripple Creek Road; thence easterly on Cripple Creek Road to its intersection with State Route 602, Cripple Creek Road; thence in a southerly direction along Cripple Creek Road to its intersection with the Wythe-Grayson County line; thence in a westerly direction along Wythe-Grayson County line to point of beginning.

Evergreen Precinct

Beginning at intersection of Grayson Turnpike, U.S. Route 21 and Crockett Road, State Route 690; thence in a northerly direction along Crockett Road to its intersection with Greasy Creek Road, State Route 653; thence in a northerly direction along Greasy Creek Road to its intersection with Johnny Lane, State Route 652; thence in a northerly direction along Johnny Lane to its intersection with Old Stage Road, State Route 667; thence in an easterly direction along Old Stage Road to its intersection with Reed Creek; thence in an easterly and southerly direction along the centerline of Reed Creek to its intersection with Church Street; thence in a southerly direction along Church Street and Barrett Mill Road to its intersection with Whippoorwill Road, State Route 640; thence in a southeasterly direction along Whippoorwill Road to its intersection with Broadway Road, State Route 640; thence in a southeasterly direction along Broadway Road to its intersection with crest of Sand Mountain - Lick Mountain; thence in a southwesterly direction along an imaginary line across Sand Mountain - Lick Mountain and Swecker Mountain to northern end of Mule Hell Road, State Route 642; thence in a southeasterly direction along Mule Hell Road to its intersection with Davis Cemetery Road, State Route 646; thence in a westerly direction along Davis Cemetery Road to its intersection with Slate Spring Branch Road, State Route 690; thence in a westerly direction along Slate Spring Branch Road to its intersection with Cripple Creek Road, State Route 690; thence in a northeasterly direction along Cripple Creek Road to its intersection with Grayson Turnpike, U.S. Route 21, the point of beginning.

3.2.7 Central Absentee Precinct

Being such room or rooms within the County Office Building, located at 275 South Fourth Street, Wytheville, Virginia, as may be from time to time designated by the Registrar.

ARTICLE IV – Legal Status Provisions

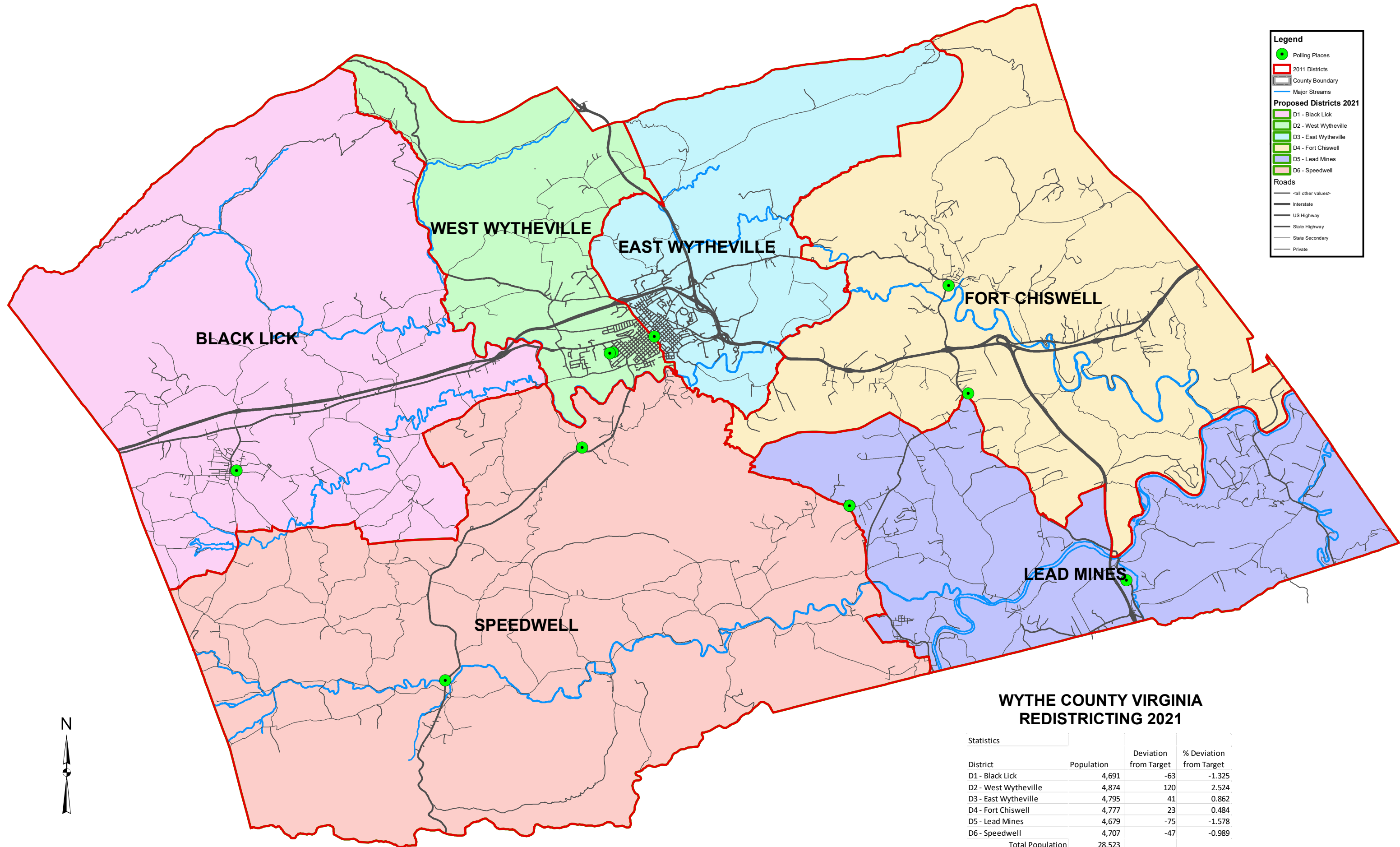
- 4.1 Certified Copies of the Ordinance. Certified copies of this ordinance and any amendments thereto shall be filed in the offices of the Wythe County Administrator's Office, and the Clerk of the Circuit Court of Wythe County, Virginia.
- 4.2 Validity. Should any article, section, subsection or provision of this ordinance be declared by a court of competent jurisdiction to be invalid or unconstitutional, such decision shall not affect the validity or constitutionality of this ordinance as a whole, or any part thereof, other than the part so declared to be invalid or unconstitutional.
- 4.3 Repeal of Prior Ordinance. Ordinance No. 2011-1, Supervisor District and Voting Precinct Ordinance of Wythe County, Virginia is hereby repealed. All other ordinances or portions of ordinances in conflict with the provisions of this ordinance are also repealed to the extent of such conflict.
- 4.4 Effective Date. This ordinance was duly considered following the required public hearing held on ____ __, 2021 at __ p.m., and was adopted by the Board of Supervisors on ____ __, 2021, the members voting as follows:

<u>NAME</u>	<u>FOR</u>	<u>AGAINST</u>	<u>ABSENT</u>
Rolland R. Cook			
B.G. Horney, Jr.			
Ryan M. Lawson			
Coy L. McRoberts			
James D. Smith			
Stacy A. Terry			
Brian W. Vaught			

This ordinance shall become effective upon approval by the Department of Justice or upon 60 days from the submission of this ordinance for approval.

I certify that this is a true and correct copy taken from the ____ __, 2021 minutes of the Wythe county Board of Supervisors.

Martha Collins, Clerk



WYTHE COUNTY VIRGINIA REDISTRICTING 2021

Statistics			
District	Population	Deviation from Target	% Deviation from Target
D1 - Black Lick	4,691	-63	-1.325
D2 - West Wytheville	4,874	120	2.524
D3 - East Wytheville	4,795	41	0.862
D4 - Fort Chiswell	4,777	23	0.484
D5 - Lead Mines	4,679	-75	-1.578
D6 - Speedwell	4,707	-47	-0.989
Total Population	28,523		
Target District Population	4,754		

*Note: Wythe County is proposing no changes to Election districts.

